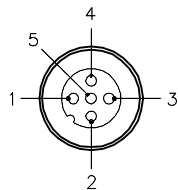


# MALE END VIEW



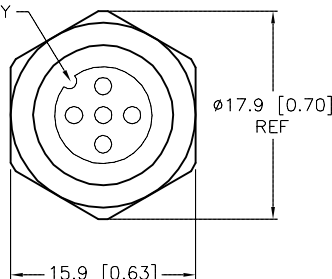
1 = BROWN  
2 = WHITE  
3 = BLUE  
4 = BLACK  
5 = GRAY



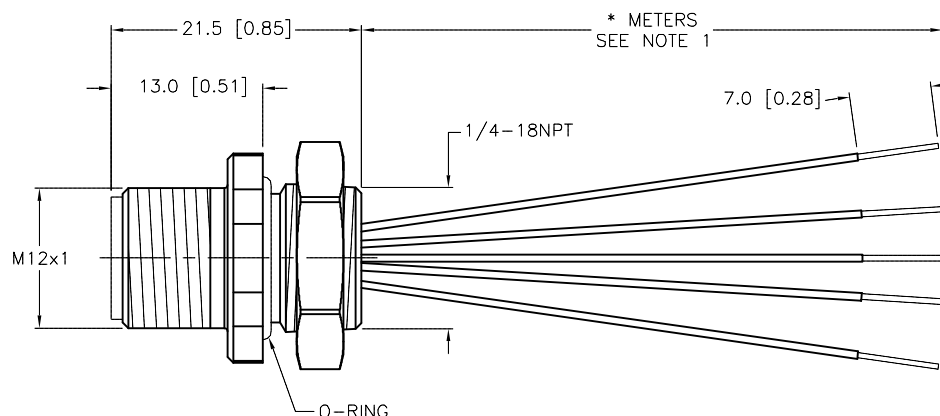
# SPECIFICATIONS

|                               |                                   |
|-------------------------------|-----------------------------------|
| CONTACT CARRIER MATERIAL      | NYLON OR TPU                      |
| CONTACT MATERIAL/PLATING      | BRASS/GOLD                        |
| HOUSING MATERIAL/PLATING      | BRASS/NICKEL                      |
| O-RING MATERIAL               | NITRILE                           |
| RATED CURRENT [A]             | 4.0 A                             |
| RATED VOLTAGE [V]             | 250 V                             |
| CONDUCTOR INSULATION MATERIAL | PVC                               |
| NUMBER OF CONDUCTORS [AWG]    | 5x22 AWG                          |
| TEMPERATURE RATING            | -40°C to +105°C (-40°F to +221°F) |
| PROTECTION CLASS              | MEETS NEMA 1,3,4,6P AND IEC IP68  |

KEYWAY ORIENTATION  
MAY VARY



END VIEW  
LOCKNUT REMOVED

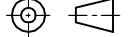


| CABLE LENGTH                | TOLERANCE*  |
|-----------------------------|---|
| ALL LENGTHS                 | + 4% (OR 50mm) OF LENGTH<br>- 0% (OR 0mm) OF LENGTH<br>WHICHEVER IS GREATER |
| STRIP LENGTH                | TOLERANCE*  |
| 0-7mm                       | ±0.5mm  |
| 8-29mm                      | ±1.0mm  |
| 30-49mm                     | ±2.0mm  |
| 50-69mm                     | ±3.0mm  |
| 70-100mm                    | ±4.0mm  |
| OVER 100mm                  | ±5.0mm  |
| *UNLESS OTHERWISE SPECIFIED |   |

## NOTES:

1. "\*" DESIGNATES LEAD LENGTH IN METERS. CONTACT TURCK TO ORDER SPECIFIC LENGTHS.

SOURCE DRAWING - FOR REFERENCE ONLY

|   |  |   |     |  |          |   |  |   |  |
|---|--|---|-----|--|----------|---|--|---|--|
| RELATED DOCUMENTS<br>1.<br>2.<br>3.<br>4. | 3RD ANGLE<br>PROJECTION  |  |     | THIS DRAWING IS<br>CONFIDENTIAL AND THE<br>PROPERTY OF TURCK<br>INC. USE OF THIS<br>DOCUMENT WITHOUT<br>WRITTEN PERMISSION IS<br>PROHIBITED. |          | <div><b>TURCK INC</b></div> <div><i>High Technology Sensors and Automation Controls</i></div> |  | 3000 CAMPUS DRIVE<br>MINNEAPOLIS, MN 55441<br>1-800-544-7769<br>(763) 553-7300<br>(763) 553-0708 fax<br>turck.com |  |
|   |  |   |     |  |          |   |  |   |  |
| MATERIAL                                  | ALL DIMENSIONS<br>DISPLAYED ON THIS<br>DRAWING ARE FOR<br>REFERENCE ONLY | DRFT  | RWC | DATE   | 05/06/05 | DESCRIPTION<br><br>FS 4.5-*/18.25   |  |   |  |
| SEE SPECIFICATIONS                        |  | APVD  |     | SCALE  | 1=.7     |   |  |   |  |
| FINISH                                    |  | UNIT OF MEASUREMENT<br><br><b>MILLIMETER [ INCH ]</b>                                 |     |  |          | IDENTIFICATION NO.  |  | REV<br><br>D  |  |
| SEE SPECIFICATIONS                        |  |   |     |  |          |   |  |   |  |
|   |  | DO NOT SCALE THIS DRAWING   |     |  |          | FILE: 777003684   |  | SHEET 1 OF  |  |
|   |  |   |     |  |          |   |  |   |  |

|     |              |    |          |         |
|-----|--------------|----|----------|---------|
| D   | ADD END VIEW | NF | 01/12/16 | 53050   |
| REV | DESCRIPTION  | BY | DATE     | ECO NO. |